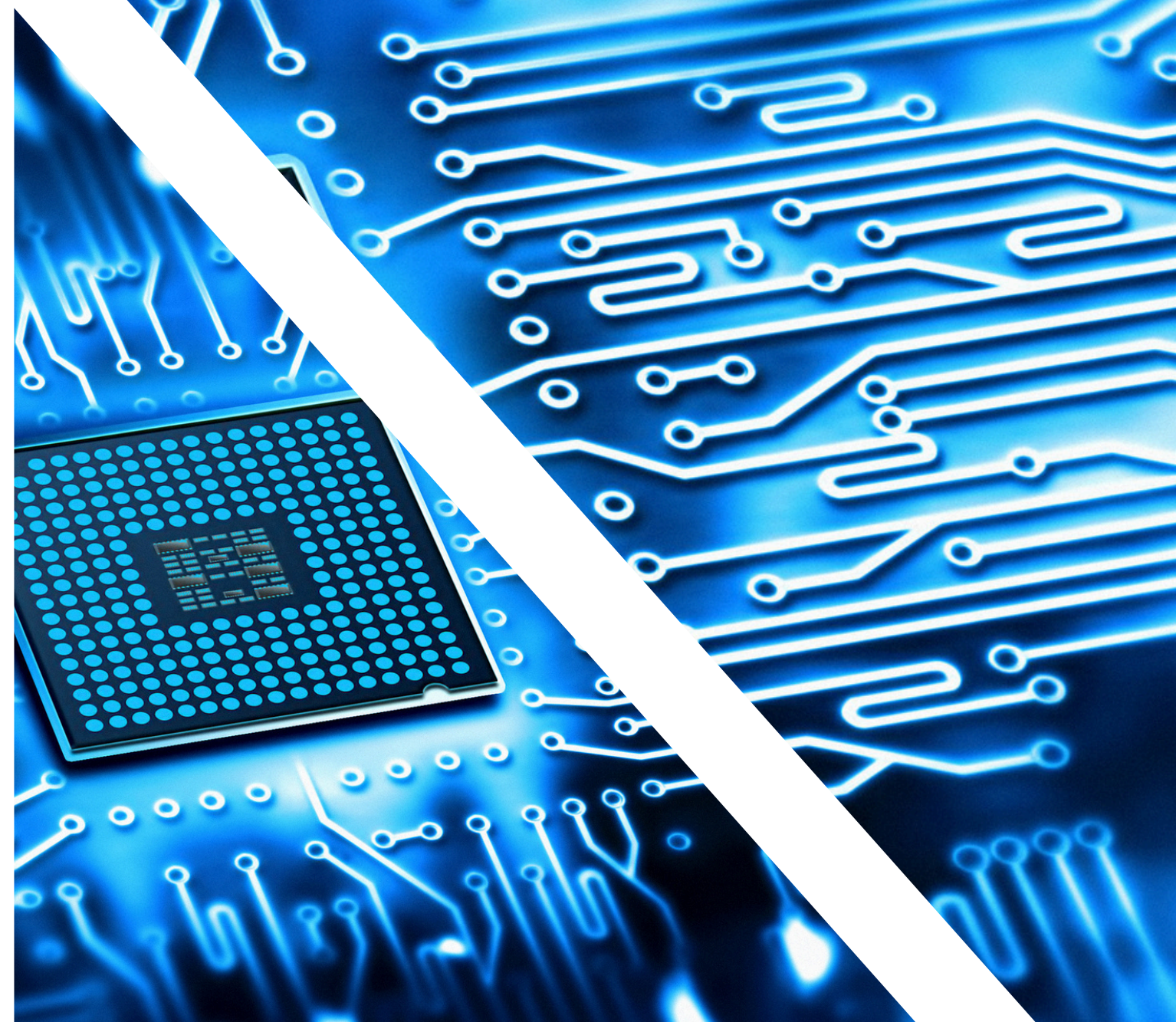
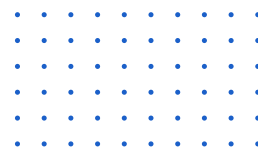


SHOWCASE

MASTERWERK GmbH

Your trusted partner for semiconductor solutions and services.





WE HAVE BEEN IMPROVING PROCESSES SINCE 2009

We have worked on over 500 successful projects with leading global companies, primarily in plant engineering for the automotive industry, in areas such as measurement systems, battery production, logistics, and more. Over time, our expertise in industrial automation has continued to develop; complex systems are part of our everyday life. Recently, we added a special task force dedicated to semiconductor repairs, installation, and upgrades, expanding our reach into this critical field. We convert large amounts of data into software programs that are becoming increasingly relevant for state-of-the-art production. With each new project, our understanding deepens, allowing us to integrate the latest advances into our solutions. Together with our customers and partners, we work towards optimal solutions to upgrade current standards.



MORE ABOUT US

Masterwerk GmbH provides the management & delivery of technical support services globally to the industry.

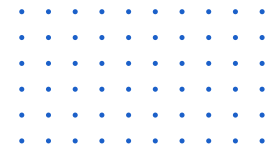
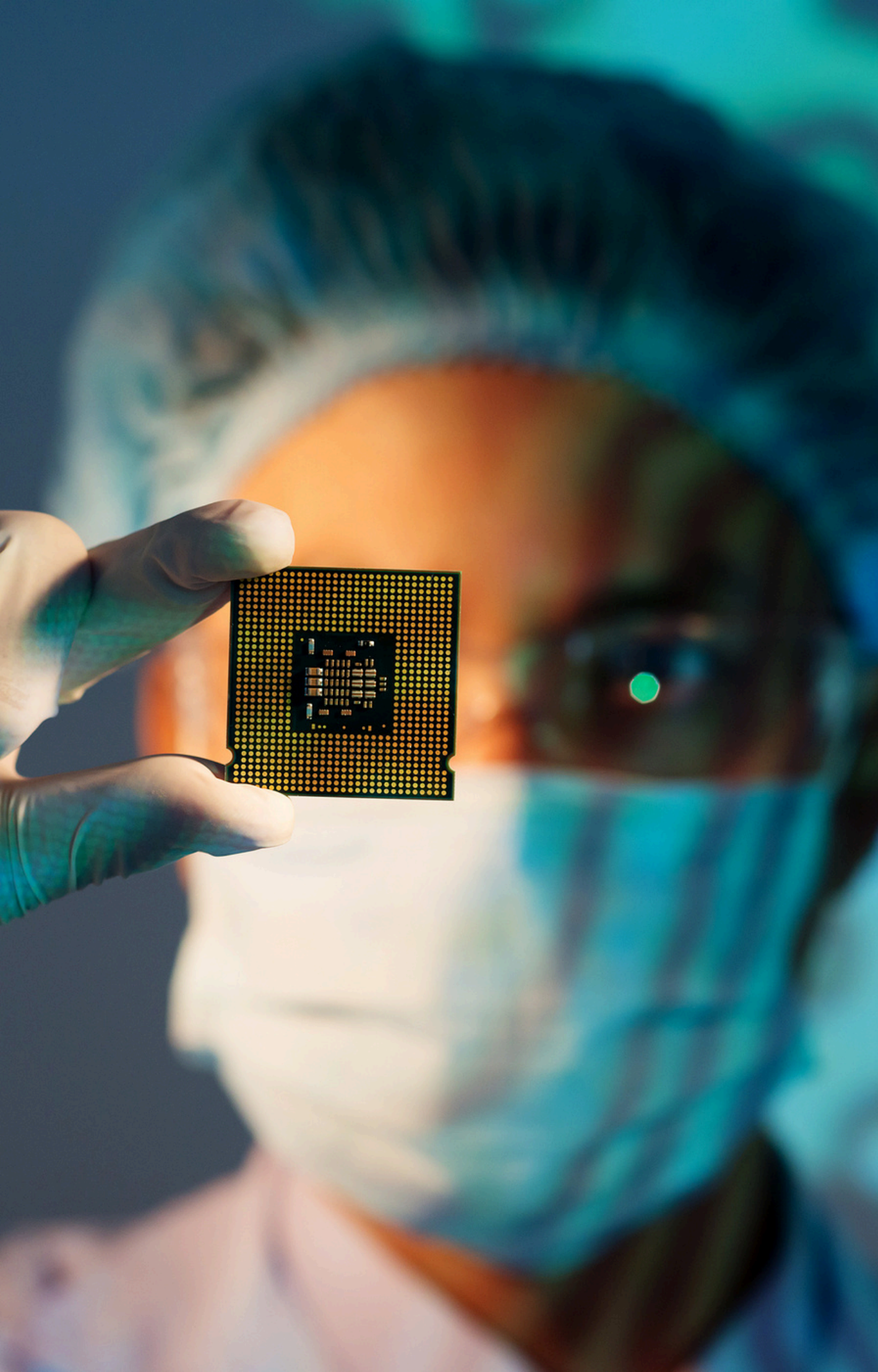
- Managed resource support services
- Tool decommissioning services
- Parts harvesting & liquidation services
- Decontamination services. (Decon)

[Learn more](#)

PROJECTS COMPLETED IN OUR SEMICONDUCTOR PORTFOLIO

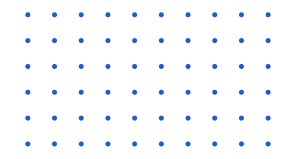
Over the past years, members of our team have worked on projects for some of the most respected companies in the industry. Our achievements reflect the trust placed in us and our consistent ability to deliver successful outcomes in collaboration with these industry leaders.





Semiconductors Technical Support

- Repairs
- Installation
- Upgrades
- Preventive Maintenance
- Annual Maintenance
- Onsite support
- De- installation (Demo)
- Equipment relocation
- Tool decommission and refurbishment



Equipment Support

- Front-end processing equipment
- Back-end processing equipment
- Lab equipment
- Facility equipment



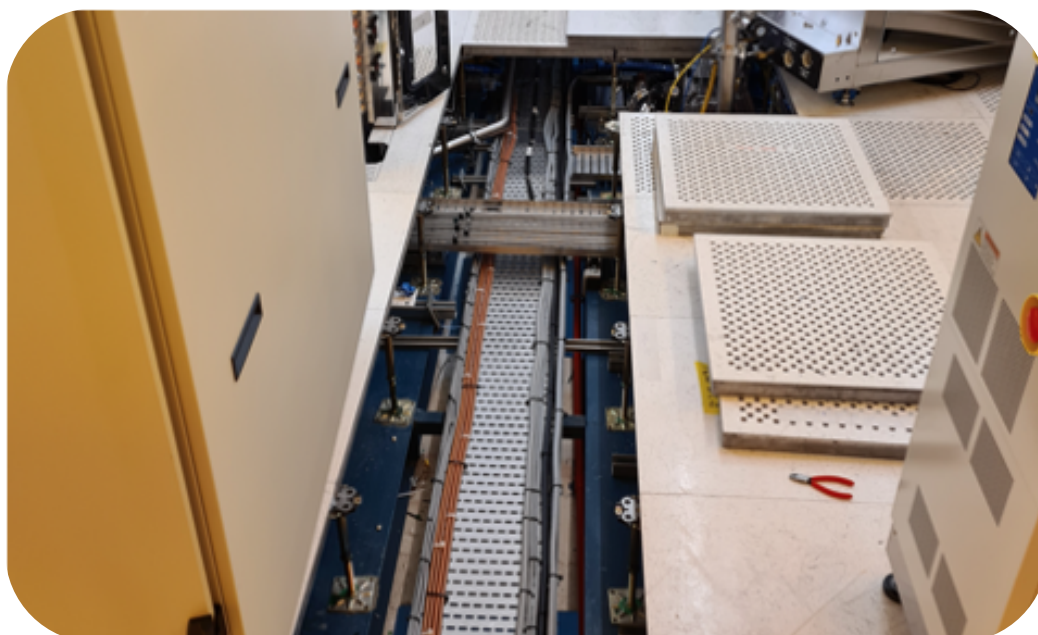


Equipment Installation

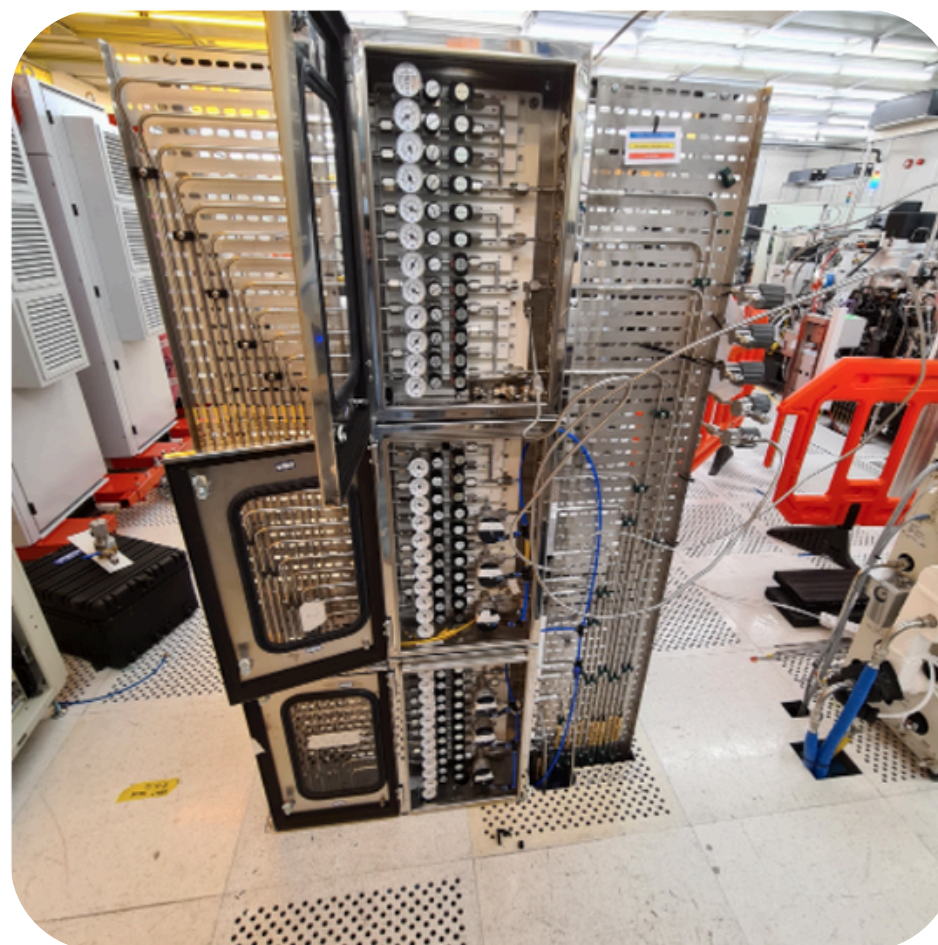
Equipment installation for semiconductor facilities involves the precise setup and calibration of complex machinery to ensure optimal performance from the start. Our installation services cover everything from initial placement and assembly to fine-tuning equipment settings, ensuring seamless integration into existing systems. With expert technicians and attention to detail, we help minimize downtime and achieve a smooth, efficient start-up for semiconductor manufacturing processes.



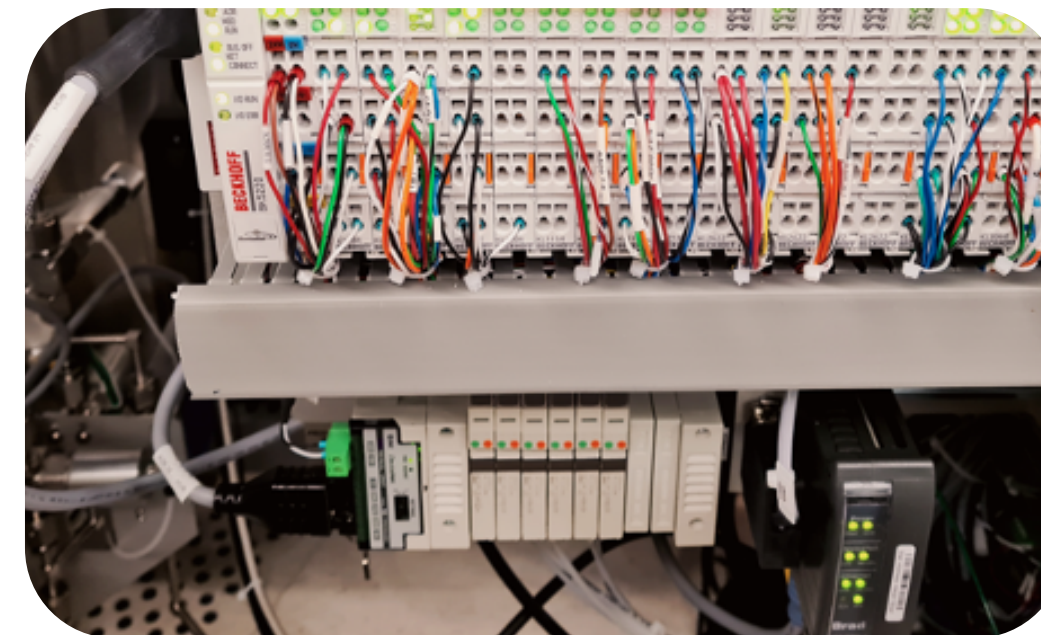
Equipment Installation



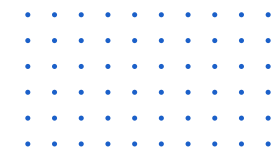
Cable trunking management and hook up



Process gasses distribution panel



PLC Wiring

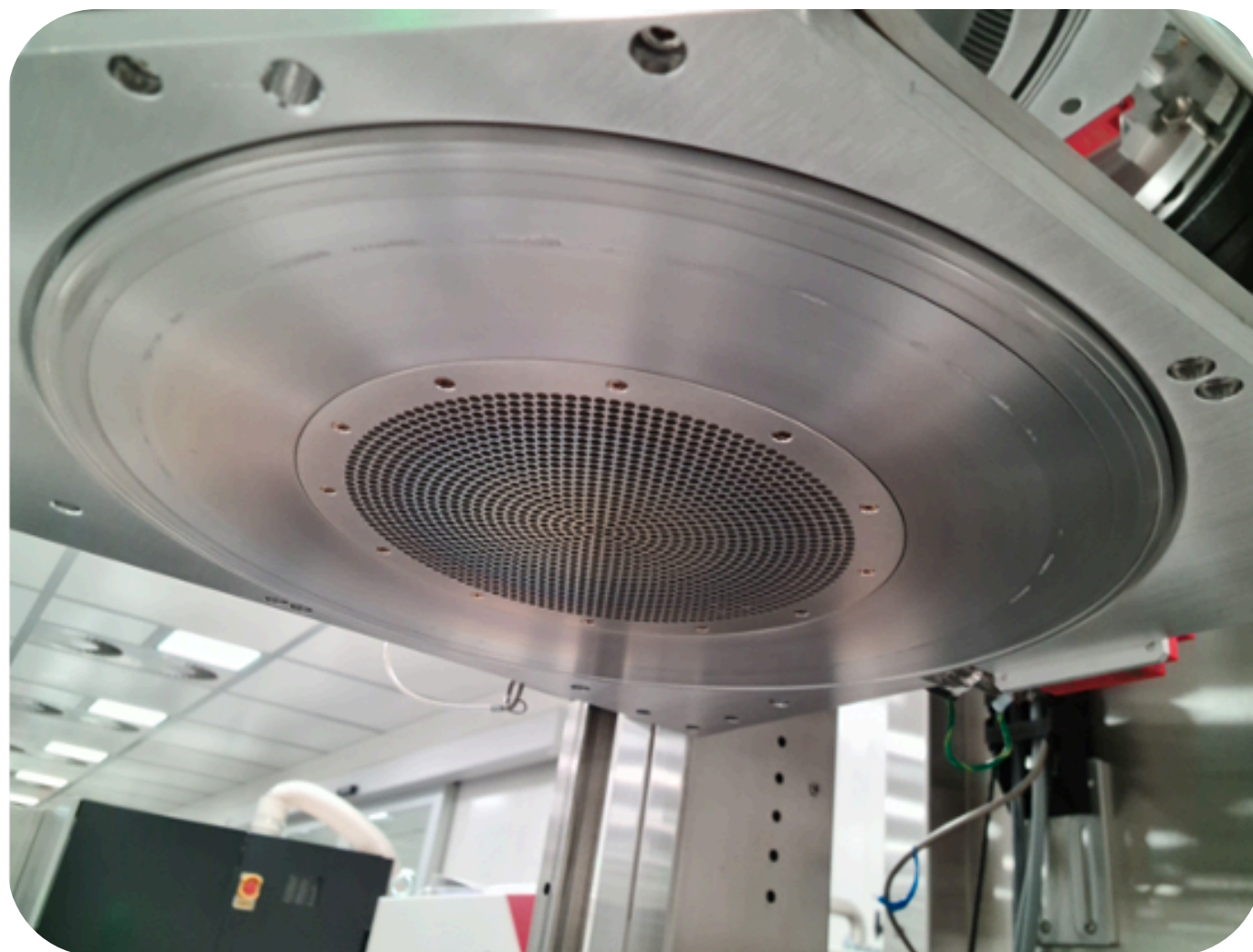


Process Support

Our team works alongside operators to monitor, adjust, and fine-tune process parameters, addressing any issues that may arise in real-time. By providing ongoing support and troubleshooting, we help maintain peak performance, reduce production disruptions, and ensure that each phase of the semiconductor manufacturing process operates smoothly and efficiently.



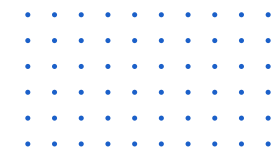
Process Support



Chamber qual and gas calibration



Chamber process kit changes



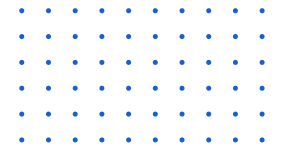
Process Data Analyzing

By analyzing critical metrics from equipment and processes, we identify patterns, detect potential issues early, and uncover opportunities for optimization. This data-driven approach allows us to support continuous improvement, reduce downtime, and make informed adjustments, ensuring that semiconductor manufacturing meets the highest standards of precision and reliability.



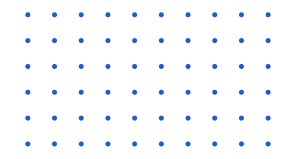


Wafer Handling Maintenance



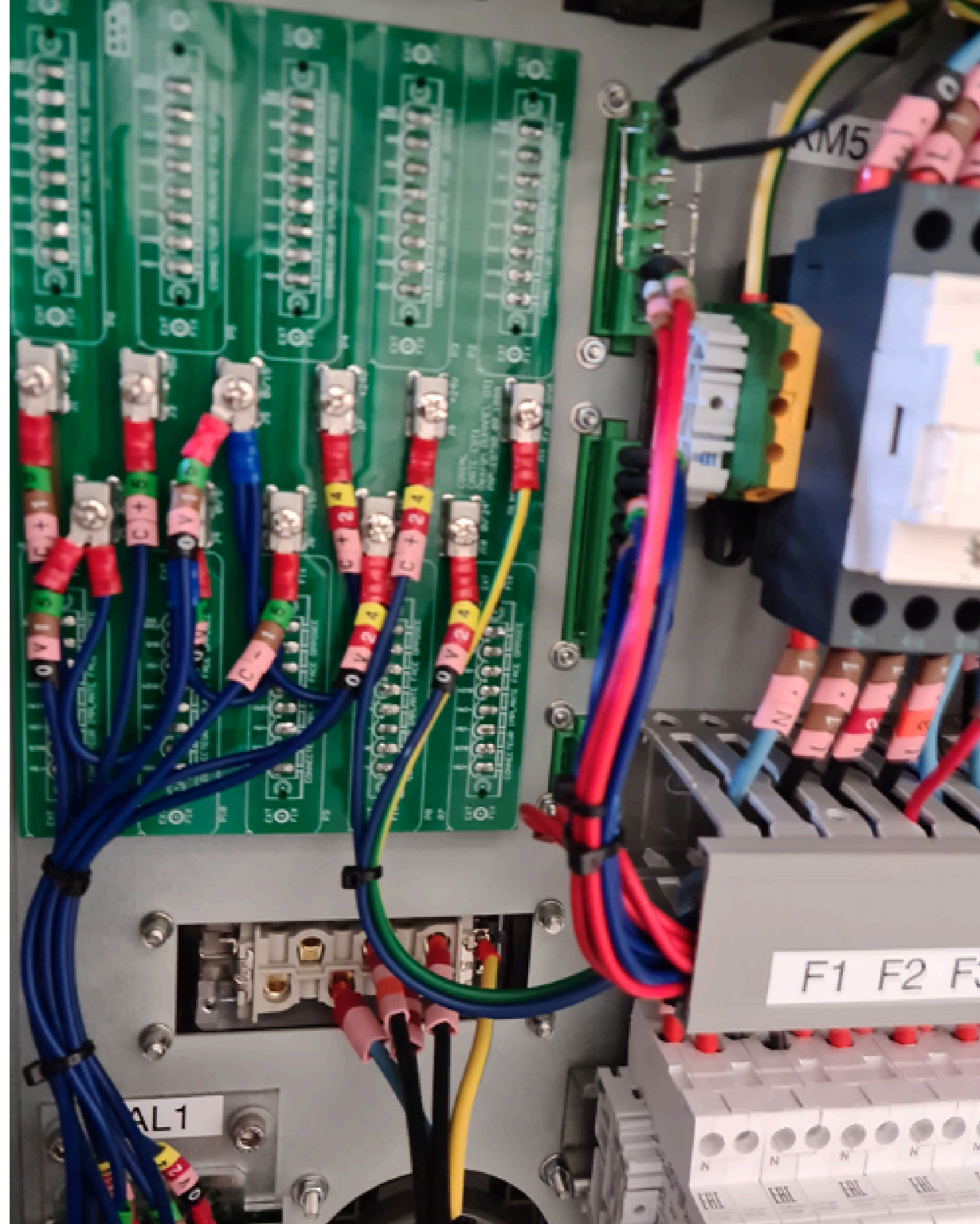
Wafer Handling Support

We work on ensuring smooth and precise wafer handling, from transport and loading to alignment and placement within processing equipment. Our support covers equipment adjustments, troubleshooting, and fine-tuning to prevent wafer damage and contamination, maintaining production efficiency and quality. By optimizing handling systems, we help minimize errors and protect valuable materials throughout the manufacturing process.

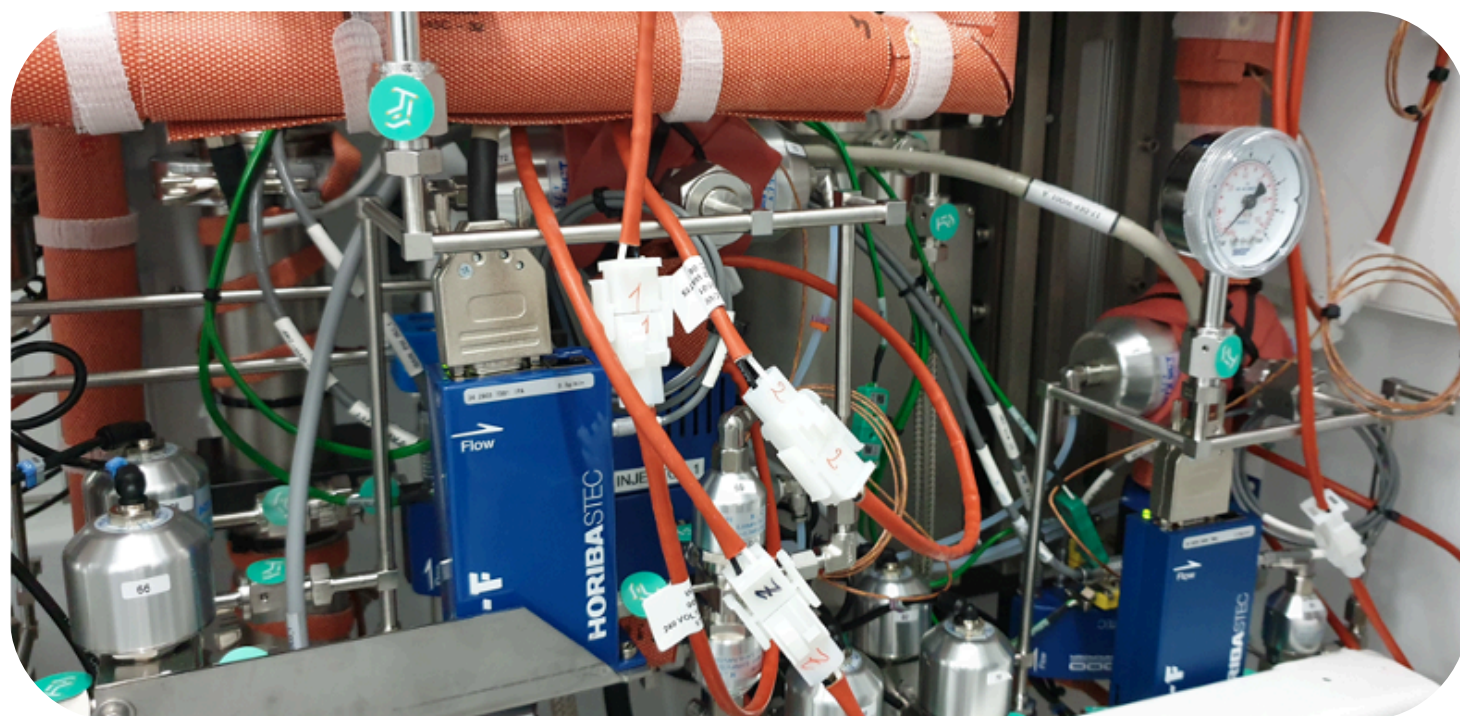


Troubleshooting

We provide comprehensive troubleshooting services to quickly identify and resolve issues across semiconductor equipment and processes. Our team addresses mechanical, electrical, and software-related problems, ensuring minimal downtime and restoring optimal functionality. Through systematic diagnostics and targeted solutions, we help maintain uninterrupted production and safeguard equipment performance.



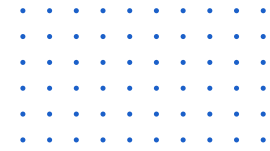
Troubleshooting



Gas panel delivery system and MFC Cal



SUB FAB cooling system and heat exchangers



CONTACT US

Optimize your semiconductor processes – rely on us for expert support, from repairs and installation to upgrades and comprehensive solutions for your technical challenges.



+49 (0) 89 545 777 98



masterwerk.eu



halbleiter@masterwerk.eu



Grosostraße 1, D-82166 Gräfelfing, near Munich

